

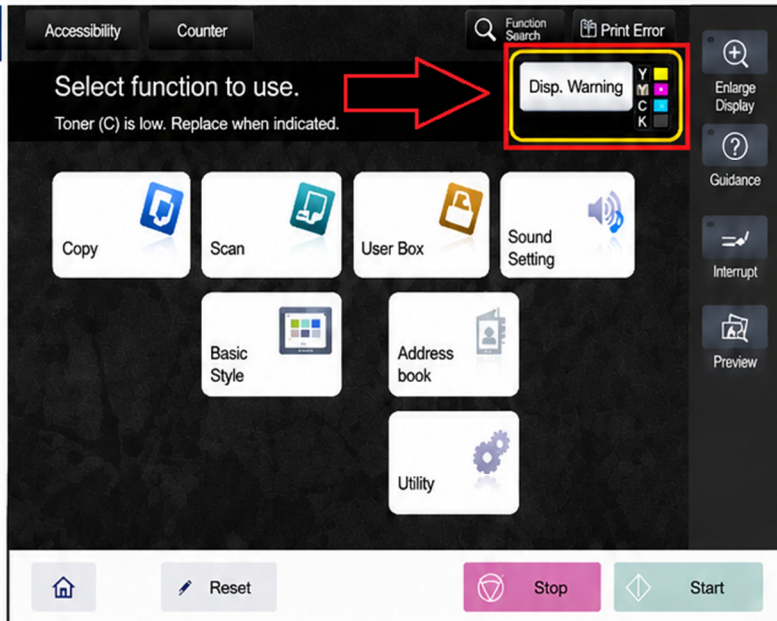
No Matching Paper Size Issues

This issue occurs when the selected paper size does not match the paper loaded in the tray or bypass.

Step 1. Check for a Display Warning

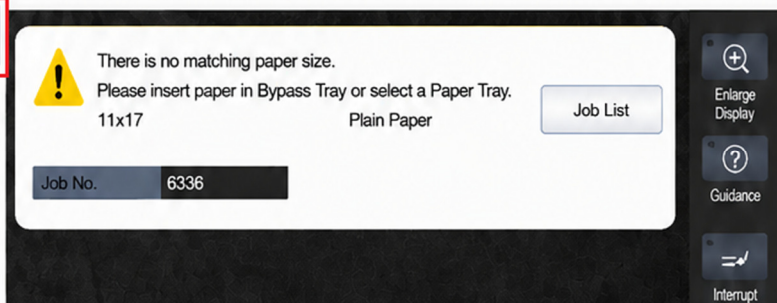
- Look at the upper right corner of the LCD screen.
- If "Disp. Warning" is displayed, select it.

This indicates the machine needs your attention.



Step 2. Review the Message

- The machine will display a message indicating there is no matching paper size.



Step 3. Check Paper Options

You have two options:

A. Select a Paper Tray

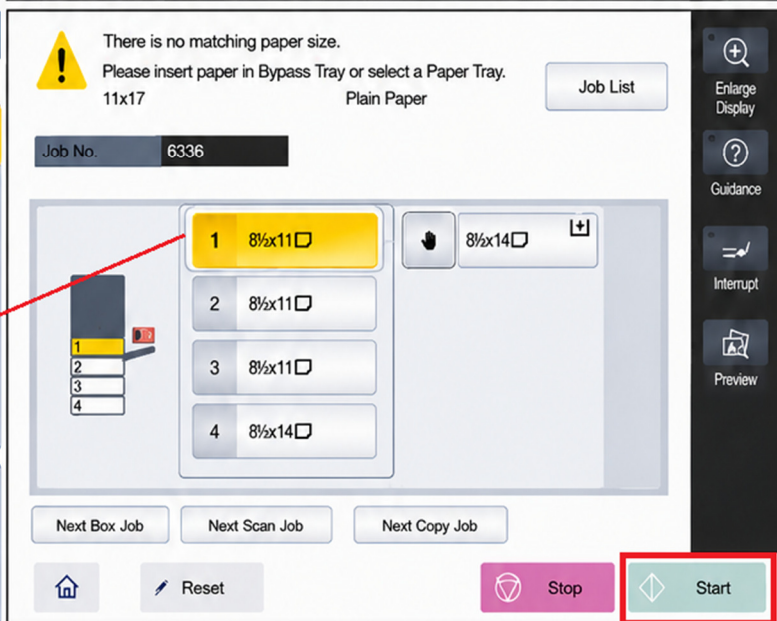
Recommended — Fastest Way to Restore Printing

- Best option if the printer has been stuck for more than 5 minutes.
- Another user may have submitted a print job using the wrong paper size.
- Since this is a shared/public printer, clearing the message quickly helps restore printing for everyone.
- Select one of the available paper trays (1, 2, 3, or 4).

- Choose the tray that contains the paper currently loaded in the machine.
- Press **Start** to continue printing and clear the queue.

B. Use the Bypass Tray

- The hand icon (👉) represents the Bypass Tray.
- If you want to use special paper or a different paper size (such as 11x17), load the correct paper into the bypass tray.
- Update the paper size setting if needed.
- Press **Start** to continue.



Summary

You either select

- Add the correct paper size in the bypass tray
- OR
- Select one of the paper trays to print the job and clear the queue.

! The paper may not print properly.

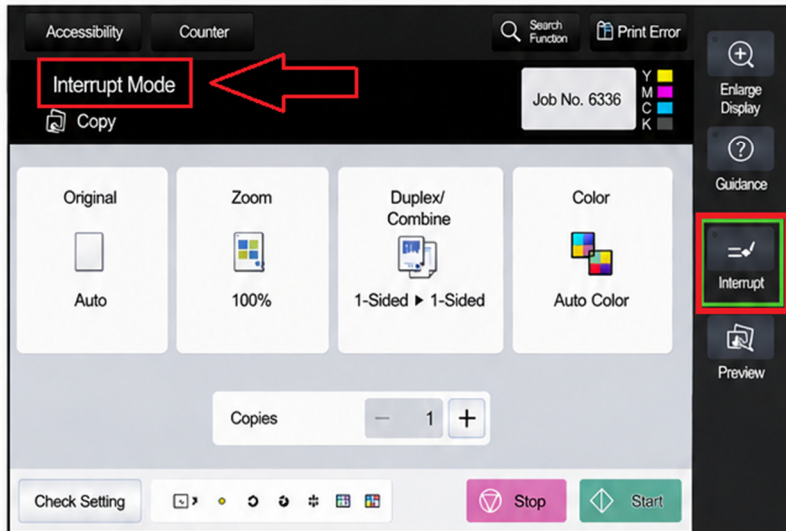
What to Do If Interrupt Was Enabled by Accident

If the Interrupt button was pressed by mistake, the machine may be in Interrupt mode. Follow the steps below to return to the original print job.

Step 1. Check the Screen

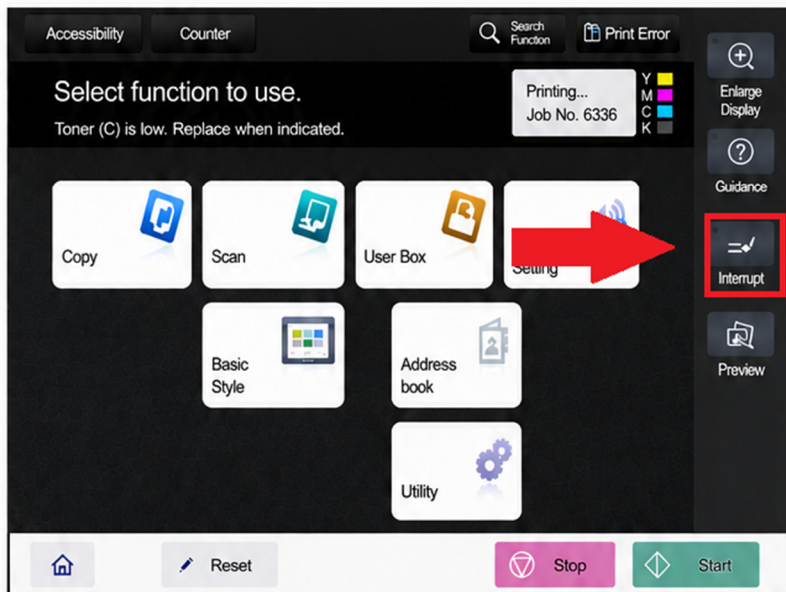
- You come to the printer and notice the **Interrupt** button is lit.
- The screen may show “Interrupt Mode” at the top.
- This means the current print job is paused.

Tip: If you did not intend to run an interrupt job, you can return to the original print job.



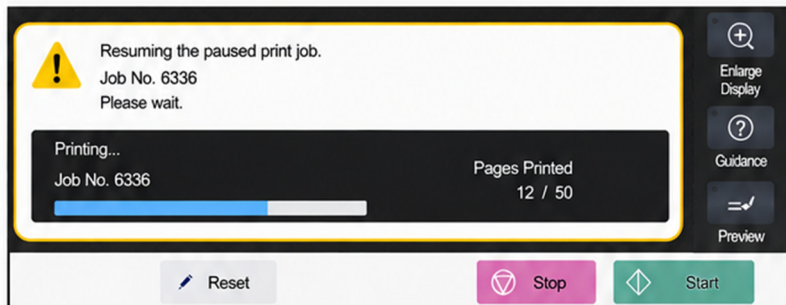
Step 2. Cancel Interrupt Mode

- Press the **Interrupt** button to cancel Interrupt Mode.
- The screen will return to the Home screen.
- The machine will go back to the paused print job.



Step 3. Resume the Original Print Job

- The original print job will automatically resume from where it was paused.
- You can check the job status on the screen.



Summary

- If Interrupt was pressed by accident, press the Interrupt button again to cancel Interrupt Mode.
- The machine will return to the Home screen and resume the original print job.
- Do not turn off the machine while a job is paused or in Interrupt.

! Do not turn off the machine while a job is paused or in Interrupt.